

HEALTHCARE INNOVATION COUNCIL



The collective professional expertise of GPEC’s councils and advisory groups helps shape the organization’s key initiatives, leverages connections to further job creation and competitiveness efforts, and supports the implementation of programs.

MISSION

Establish Greater Phoenix as a center of healthcare excellence anchored by innovation and collaboration.

The HIC will work to enhance the healthcare business ecosystem by growing assets in the region.

2017 FOCUS AND ACTIVITIES



As part of GPEC’s FY2017 Action Plan, and in accordance with industry trends and needs, the HIC will focus on identifying common regional assets across industry sectors to further position Greater Phoenix as a healthcare investment and research destination.



The Council will host events that foster connections, facilitate partnerships and enhance opportunities for innovation in the Greater Phoenix healthcare ecosystem.



In partnership with the GPEC research team, the Council will guide research to better understand the healthcare innovation space and existing assets in biomedicine, medical technology and medical devices.



The HIC will support regional efforts to create high impact districts centered on healthcare and biomedical innovation. This includes efforts by municipalities, providers and innovators to create business and healthcare districts that foster growth in collaborative, innovative patient care and biomedical business success.

MEMBERS

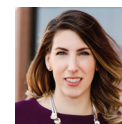
- Aetna
- Arizona Bio Industry Association
- Arizona State University
- Banner Health
- Barclay Legal
- BBVA Compass
- Blue Cross Blue Shield of Arizona
- Cancer Treatment Centers of America
- Celgene Corporation
- City of Mesa
- City of Phoenix
- City of Scottsdale
- Cox Communications
- Dignity Health
- Intel
- Mayo Clinic
- Midwestern University
- National Bank of Arizona
- Polsinelli
- Siemens
- Snell & Wilmer
- Town of Gilbert
- TriWest Healthcare Alliance
- University of Arizona
- VisionGate

LEADERSHIP // CO-CHAIRS

LINDA HUNT
Chief Executive Officer
Dignity Health

HEIDI JANNENGA
President & Co-Founder
WebPT

Interested in learning more?
CONTACT US TODAY:



MAUREEN HOWELL
Senior Director, Research and Strategy

☎ 602.262.8605
✉ mhowell@gpec.org

MEMBER COMMUNITIES

| | | | | | |
|-----------------|-------------|----------------|----------|-------------|------------|
| MARICOPA COUNTY | CAREFREE | FOUNTAIN HILLS | GOODYEAR | PHOENIX | TEMPE |
| APACHE JUNCTION | CASA GRANDE | GILA BEND | MARICOPA | QUEEN CREEK | TOLLESON |
| AVONDALE | CHANDLER | GILBERT | MESA | SCOTTSDALE | WICKENBURG |
| BUCKEYE | EL MIRAGE | GLENDALE | PEORIA | SURPRISE | YOUNTOWN |