

Investor Levels

GREATER PHOENIX, GREATER TOGETHER

GPEC Strategic Councils

⊕ Strategic Planning Council (GPEC Next)

GPEC Next serves as an advisory council to GPEC's leadership team and the Board of Directors, responsible for strategic initiatives that advance the region including the development of the Strategic Plan, Action Plan and planning for the biennial Washington, D.C. ExecMission. GPEC Next also oversees the annual metrics that determine GPEC's community contractual obligations.

GPEC Leadership Councils

⊕ Community Building Consortium (CBC)

The CBC provides a forum for GPEC investors in the commercial real estate, architecture, engineering, construction and related business services industries to connect to advance the region's competitiveness. GPEC shares pipeline activity, market trends and in-depth insights on why companies are choosing to locate to the Greater Phoenix region. GPEC uses this group as a sounding board for pro-economic development policy and initiatives.

⊕ Healthcare Innovation Council (HIC)

The HIC advances healthcare innovation, workforce, and investment in Greater Phoenix. Anchored by innovative assets and world-class leadership, this council facilitates collaboration and coordination across the healthcare innovation ecosystem. The HIC translates knowledge to action for regional advancement recognized nationwide.

⊕ International Leadership Council (ILC)

The ILC is a high-level advisory board that consists of industry and community leaders that support GPEC in its international business attraction and commercial diplomacy efforts. The ILC provides strategic direction and oversight for the implementation of the core trade and FDI strategies within the Greater Phoenix region, including supporting the goals and objectives set in the Greater Phoenix Global Investment Plan.

Invest with GPEC

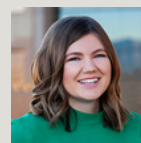
At each level, GPEC's investors provide support for our mission, helping to shape the region's economic future. We invite you to join us as we build an equitable and innovation-centric economy for one of the fastest-growing regions in the nation.

Meet Our Engagement Team



Ashley Tupper
Senior Vice President,
External Relations

T 602.262.8602
atupper@gpec.org



Lindsay Hahn
Senior Director,
Engagement Strategy
& Marketing

T 602.262.8609
lhahn@gpec.org



Cora Rodriguez
Manager, Investor
Engagement & Events

T 602.262.8616
tcrodriguez@gpec.org

Ready to invest with us?



Scan QR code or
visit gpec.org for
more information.

Investor Levels at a Glance

	Visionary \$180,000+	Champion \$120,000+	Accelerator \$60,000+	Builder \$30,000+	Advocate \$15,000+	Supporter \$7,500+
Recognition in marketing and research collateral as a top investor	X					
Prominent recognition in GPEC office and on GPEC homepage	X	X				
Bespoke marketing opportunities to boost local brand awareness	X	X	X			
Opportunity to serve on Board of Directors	1 Seat	1 Seat	Eligible			
Opportunity for Board Director to join the Executive Committee of the board	1 Seat	Eligible	Eligible			
Washington, D.C. Executive Mission (Biennial)	Registration fee waived (1)	Eligible	Eligible	Eligible		
Hosting opportunities for corporate relocations	X	X	X	X		
Opportunity to serve on GPEC's strategic planning council (GPEC Next)	X	X	X	X		
Sponsorship of GPEC signature events	<ul style="list-style-type: none"> • Exclusive events • Annual event* • ExecMissions • FamTours 	<ul style="list-style-type: none"> • Annual event* • FamTours 	FamTours	FamTours		
Review & recognition with relevant GPEC Industry Insight Reports	X	X	X	X		
VC funding SMS text alerts	X	X	X	X		
Opportunity to serve on GPEC leadership councils	All	All	3	2	1	
International delegation involvement	X	X	X	X	X	
Opportunity to offer business services to potential locates (iTrack program)	X	X	X	X	X	
Custom research services	X	X	X	X	X	
Dedicated GPEC representative	X	X	X	X	X	
Invitation to GPEC exclusive events	X	X	X	X	X	X
Quarterly economic report	X	X	X	X	X	X
Exclusive networking & learning opportunities through the GPEC Ambassador Program	X	X	X	X	X	X
Highlighted as investor in GPEC Action Plan and Annual Report	X	X	X	X	X	X
Recognition online as a GPEC investor	X	X	X	X	X	X
Network with CEOs and public officials	X	X	X	X	X	X
Monthly newsletter containing GPEC's metrics report	X	X	X	X	X	X

* Annual event as it occurs in a respective fiscal year.